



Pipe Support

Ventilation & Airconditioning Supports

7

Duct Bracket

p 7.002



VDBL

p 7.002



VDBZ

p 7.003



VDBT

p 7.003



VDBH

7a

Duct Clamps

p 7.004



AIR-N

p 7.005



AIR-R

7b

Accessories

p 7.006



DIN7504K

p 7.006



VDC

p 7.007



TPVC

p 7.007



TRR

p 7.007



TCS

p 7.007



TPS

7c



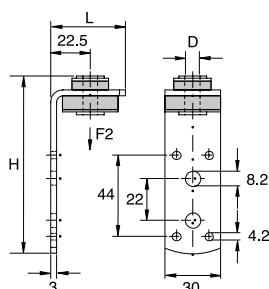
Duct Bracket

Ventilation duct bracket Type L with sound insulator

Material : Steel DX51D+Z275 - EN 10327
 EPDM/SBR black; SHORE A = $45^\circ \pm 5^\circ$
 Sound insulation value on average 16 dB(A)



VDBL



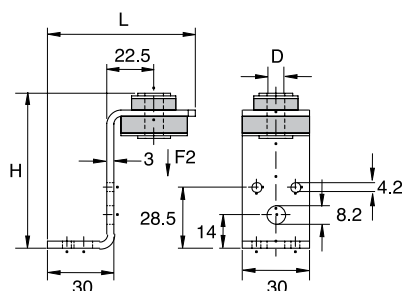
Art.Nr.	D mm	L mm	H mm	F2 kN	kg/100	
1470407	8.5	40	93	3.100	9.8	100

Ventilation duct bracket Type Z with sound insulator

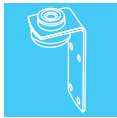
Material : Steel DX51D+Z275 - EN 10327
 EPDM/SBR black; SHORE A = $45^\circ \pm 5^\circ$
 Sound insulation value on average 16 dB(A)



VDBZ



Art.Nr.	D mm	L mm	H mm	F2 kN	kg/100	
1470408	8.5	65	70	3.100	9.6	100



7.003

Duct Bracket

Ventilation duct bracket with sound insulator

Material : Steel DX51D+Z275 - EN 10327

TPE bleu; SHORE A = 45° ±5°

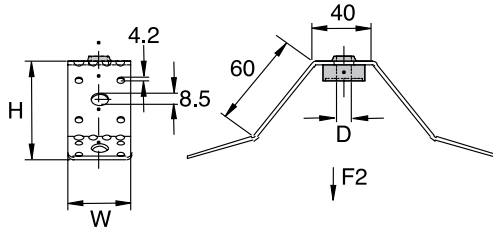
Temperature durability: -40°C bis +120°C

7a

Ventilation & Airconditioning Supports



VDBT



Art.Nr.	D mm	G	W mm	H mm	F2 kN	kg /100	
1470800	9	M8	40	60	2.0	14.5	100
1471000	11	M10	40	60	2.0	14.8	100



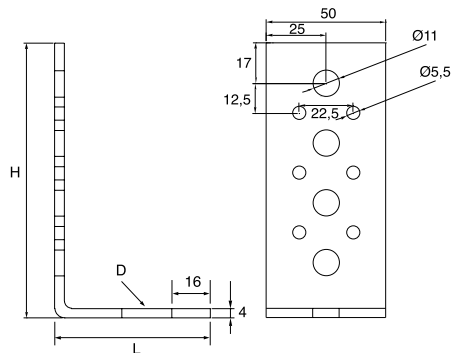
Heavy duty Duct Bracket

Material : Plastic

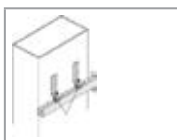
Finish : Electro zinc plated - DIN EN 12329



VDBH



Art.Nr.	L mm	H mm	LxW mm	kg /100	
VDBH5	65	115	21x11	27.6	25

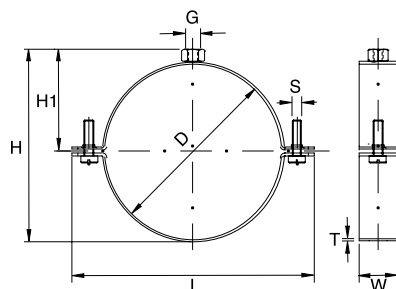




Duct Clamps

Duct Clamp

Material : Steel DX51D+Z275 - EN 10327



Art.Nr.	DN	D mm	G	L mm	W mm	H mm	H1 mm	T mm	S	F2 kN	kg/100	
1260808	80	84	M8/M10	122	25	94	51	1.5	M6	0.6	11.3	100
1261008	100	105	M8/M10	142	25	114	61	1.5	M6	0.6	12.5	100
1261258	125	130	M8/M10	167	25	139	73	1.5	M6	0.6	15.3	100
1261408	140	145	M8/M10	182	25	154	81	1.5	M6	0.6	15.5	100
1261508	150	155	M8/M10	192	25	164	86	1.5	M6	0.6	17.1	100
1261608	160	165	M8/M10	202	25	174	91	1.5	M6	0.6	19.5	100
1261808	180	185	M8/M10	222	25	194	101	1.5	M6	0.6	38.3	100
1262008	200	205	M8/M10	242	25	214	111	1.5	M6	0.6	20	100
1262248	224	229	M8/M10	266	25	238	123	1.5	M6	0.6	48.7	100
1262508	250	255	M8/M10	292	25	264	136	1.5	M6	0.6	27	50
1262808	280	285	M8/M10	322	25	294	151	1.5	M6	0.6	57.6	50
1263008	300	307	M8/M10	342	25	314	161	1.5	M6	0.6	31	50
1263158	315	322	M8/M10	357	25	329	169	1.5	M6	0.6	32.2	50
1263558	355	362	M8/M10	397	25	369	188	1.5	M6	0.6	36.3	50
1264008	400	407	M8/M10	442	25	419	211	1.5	M6	0.6	40.1	25
1264508	450	457	M8/M10	500	25	470	240	3.0	M8	2.0	88.3	1
1265008	500	507	M8/M10	560	25	520	260	3.0	M8	2.0	100	1
1265608	560	567	M8/M10	615	25	570	285	3.0	M8	2.0	110	1
1266008	600	608	M8/M10	665	25	610	310	3.0	M8	2.0	116.6	1
1266308	630	639	M8/M10	690	25	640	330	3.0	M8	2.0	124.1	1

Art.Nr.	DN	D mm	L mm	W mm	H mm	H1 mm	T mm	S	F2 kN	kg/100	
1267108	710	719	770	25	725	370	3.0	M8	2.0	137.5	1
1268008	800	810	850	25	815	415	3.0	M8	2.0	153.7	1
1269008	900	910	955	30	925	470	3.0	M8	2.5	197.4	1
1261018	1000	1012	1065	30	1020	515	3.0	M8	2.5	218.9	1
1261138		1132	1180	30	1135	570	3.0	M8	2.5	243	1
1261268	1250	1262	1295	30	1270	635	3.0	M8	2.5	268.9	1



7.005

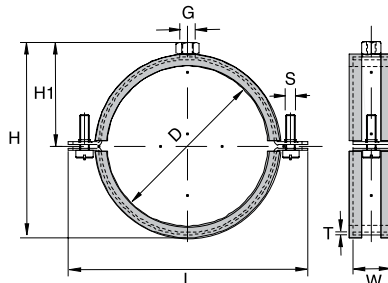
Duct Clamps

Duct Clamp with sound insulation

Material : Steel DX51D+Z275 - EN 10327
 EPDM/SBR black; SHORE A = 45°±5°
 Temperature durability: -40°C bis +100°C
 Sound insulation value on average 17 dB(A)

7b

Ventilation & Airconditioning Supports



Art.Nr.	DN	D mm	G	L mm	W mm	H mm	H1 mm	T mm	S	F2 kN	kg /100	
1260719		75	M8/M10	121	25	98	51	1.5	M6	0.600	15.7	100
1260809		84	M8/M10	130	25	107	56	1.5	M6	0.600	20.3	100
1260909		94	M8/M10	140	25	117	61	1.5	M6	0.600	18.1	100
1261009		105	M8/M10	150	25	127	66	1.5	M6	0.600	20.6	100
1261129		117	M8/M10	162	25	139	72	1.5	M6	0.600	24	100
1261259		130	M8/M10	175	25	152	78	1.5	M6	0.600	23.1	100
1261409		145	M8/M10	190	25	167	86	1.5	M6	0.600	25.4	100
1261509		155	M8/M10	200	25	177	91	1.5	M6	0.600	27.2	100
1261609		165	M8/M10	210	25	187	96	1.5	M6	0.600	28	100
1261809		185	M8/M10	230	25	207	106	1.5	M6	0.600	30.8	50
1262009		205	M8/M10	250	25	227	116	1.5	M6	0.600	34.7	50
1262249		229	M8/M10	274	25	251	128	1.5	M6	0.600	37.7	50
1262509		255	M8/M10	300	25	277	141	1.5	M6	0.600	41.2	50
1262809		285	M8/M10	330	25	307	156	1.5	M6	0.600	44.9	50
1263009		307	M8/M10	350	25	327	166	1.5	M6	0.600	50	50
1263159		322	M8/M10	365	25	342	173	1.5	M6	0.600	50.5	50
1263559		362	M8/M10	405	25	382	193	1.5	M6	0.600	57.4	50
1264009		407	M8/M10	450	25	427	216	1.5	M6	0.600	62.7	25
1264509		457	M8/M10	515	25	475	240	3.0	M8	2.000	116	1
1265009		507	M8/M10	565	25	515	265	3.0	M8	2.000	128.8	1
1265609		567	M8/M10	635	25	585	300	3.0	M8	2.000	143.3	1
1266009		608	M8/M10	665	25	625	315	3.0	M8	2.000	152.5	1
1266309		639	M8/M10	695	25	655	335	3.0	M8	2.000	162.4	1

Art.Nr.	DN	D mm	L mm	W mm	H mm	H1 mm	T mm	S	F2 kN	kg /100	
1267109	719	775	25	735	375	375	3.0	M8	2.000	182.8	1
1268009	810	860	25	820	420	420	3.0	M8	2.000	202.1	1
1269009	910	980	30	935	465	465	3.0	M8	2.500	274.5	1
1261019	1012	1075	30	1020	510	510	3.0	M8	2.500	308.7	1
1261139	1132	1180	30	1150	570	570	3.0	M8	2.500	342.8	1
1261269	1262	1310	30	1280	630	630	3.0	M8	2.500	371.7	1

TYCENSUP 06/09



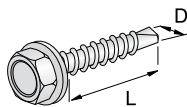
Accessories


Self drilling screw DIN7504K

Material : Steel DD11 - EN 10111



DIN7504K



Art.Nr.	D mm	L mm	kg /100	
750453513	3.5	13	0.2	1000
750453516	3.5	16	0.2	1000
750453519	3.5	19	0.2	1000
750453522	3.5	22	0.2	1000
750453913	3.9	13	0.2	1000
750453916	3.9	16	0.2	1000
750453919	3.9	19	0.2	1000
750453922	3.9	22	0.2	1000
750454213	4.2	13	0.2	1000
750454216	4.2	16	0.2	1000
750454219	4.2	19	0.2	1000
750454222	4.2	22	0.2	1000
750454813	4.8	13	0.2	1000
750454816	4.8	16	0.2	1000
750454819	4.8	19	0.2	1000
750454822	4.8	22	0.2	1000
750454825	4.8	25	0.2	1000
750456319	6.3	19	0.2	1000
750456322	6.3	22	0.2	1000
750456325	6.3	25	0.2	1000
750456332	6.3	32	0.2	1000

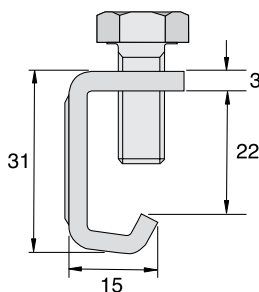
Ventilation Duct Clamp


Material : Steel DD11 - EN 10111

Finish : Electro zinc plated - DIN EN 12329



VDC



Art.Nr.	kg /100	
VDC	0.5	200



7.007

Accessories

Soft PVC Duct tape

Material : Soft PVC



TPVC

Art.Nr.	W mm	Kg /100	
TPVC50	50	13.0	80

Reinforced duct tape

Material : Polyethylene



TRR

Art.Nr.	W mm	Kg /100	
TRR50	50	94.0	18

Cold shrink tape

Material : Aluminium flashing tape



TCS

Art.Nr.	W mm	Kg /100	
TCS50	50	92.0	24

Duct sealing tape

Material : Polyethylene (DIN 53577)



TPS

Art.Nr.	W mm	T mm	Kg /100	
TPS15-4	15	4	5.0	1
TPS155	15	5	6.0	1
TPS196	19	6	9.0	1
TPS9-4	9	4	3.0	1

7c

Ventilation & Airconditioning Supports

TYCENSUP 06/09